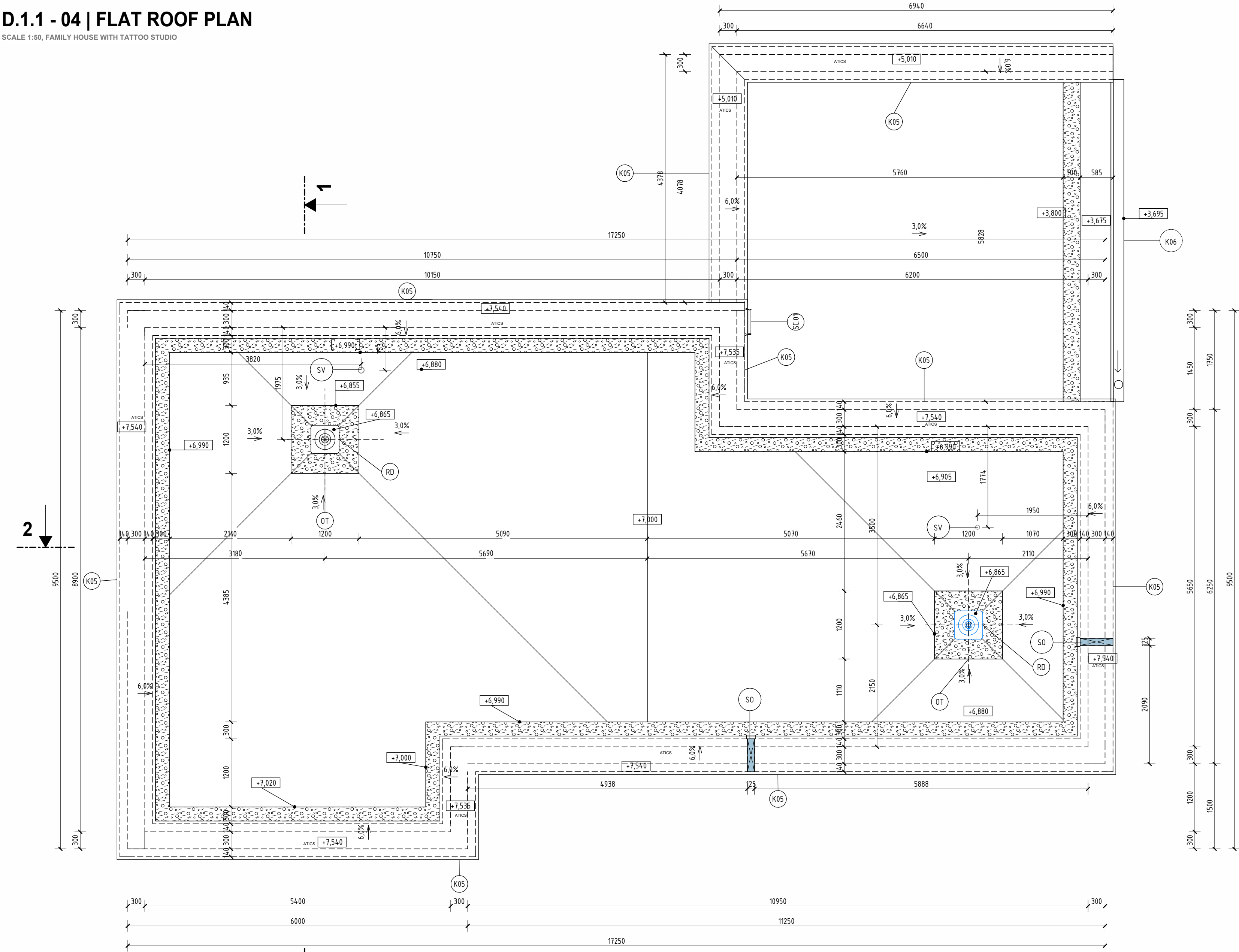
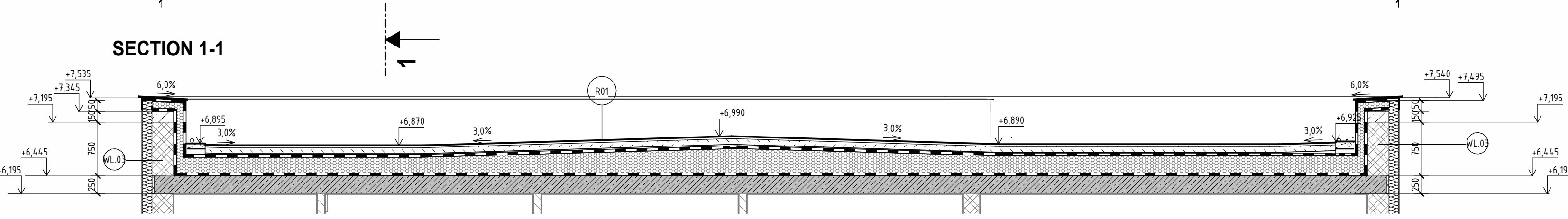
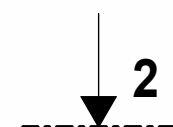


D.1.1 - 04 | FLAT ROOF PLAN

SCALE 1:50, FAMILY HOUSE WITH TATTOO STUDIO



SECTION 1-1



LEGEND

LEGEND OF MATERIALS

- LOAD-BEARING MASONRY - GROUND CERAMIC BLOCK, STRENGTH CLASS P15/P10, GROUND CLAY BLOCK FOR 300 mm WALL THICKNESS, LAID WITH THIN-LAYER MORTAR
- WALLS FOUNDED ON SYSTEM FOUNDATION BLOCK 300 mm THICK, WITH FOUNDATION MORTAR
- LOAD-BEARING MASONRY - GROUND CERAMIC BLOCK, STRENGTH CLASS P15, GROUND CLAY BLOCK FOR 240 mm WALL THICKNESS, LAID WITH THIN-LAYER MORTAR
- WALLS FOUNDED ON SYSTEM FOUNDATION BLOCK 300 mm THICK, WITH FOUNDATION MORTAR
- NON-LOAD-BEARING MASONRY - GROUND CERAMIC BLOCK, STRENGTH CLASS P10, GROUND CLAY BLOCK FOR 115 mm WALL THICKNESS, LAID WITH THIN-LAYER MORTAR
- THERMAL INSULATION MADE OF EXPANDED POLYSTYRENE (EPS), THICKNESS ACCORDING TO THE COMPOSITION, STRAIGHT EDGE, DECLARED THERMAL CONDUCTIVITY COEFFICIENT $\lambda_D = 0.037 \text{ W}\cdot\text{m}^{-1}\cdot\text{K}^{-1}$, COMPRESSIVE STRENGTH AT 10% DEFORMATION $\sigma_{10\%} = 100 / 150 \text{ KPa}$ - DEPENDING ON THE COMPOSITION
- THERMAL INSULATION MADE OF EXPANDED POLYSTYRENE (EPS), THICKNESS ACCORDING TO LAYER COMPOSITION, STRAIGHT EDGE, DECLARED THERMAL CONDUCTIVITY COEFFICIENT $\lambda_D = 0.031 \text{ W}\cdot\text{m}^{-1}\cdot\text{K}^{-1}$, COMPRESSIVE STRENGTH AT 10% DEFORMATION $\sigma_{10\%} = 70 \text{ kPa}$ (DEPENDING ON LAYER COMPOSITION)
- REINFORCED CONCRETE - CLASS AND EXPOSURE ACCORDING TO THE STRUCTURAL LAYER COMPOSITION
- WATERPROOFING MADE OF SBS-MODIFIED BITUMEN MEMBRANES WITH REINFORCING LAYER ACCORDING TO LAYER COMPOSITION. THICKNESS ACCORDING TO LAYER COMPOSITION, FULLY BONDED OR TORCHED ONTO A PRIMED SURFACE

LEGEND OF MATERIALS

- CONSTRUCTION LAYERS - SEE CONSTRUCTION LAYER BOOK
- CONSTRUCTION DETAILS - SEE FOLDER D.1.2
- ALL DIMENSIONS MUST BE VERIFIED ON SITE ACCORDING TO THE ACTUAL EXECUTION
- FLASHING OF PARAPETS AND DOWNPIPES WILL BE MADE FROM GALVANIZED STEEL SHEET, THICKNESS 0.6 MM, WITH HB POLYESTER SURFACE FINISH IN ANTHRACITE COLOR
- AT A DISTANCE OF 500 MM AROUND ROOF DRAINS, OVERFLOWS, AND EMERGENCY DRAINS, GRAVEL WITH A GRAIN SIZE OF 16 - 32 MM MUST BE USED
- ALL PENETRATIONS THROUGH THE VAPOR BARRIER AND WATERPROOFING MUST BE SEALED WITH A BITUMEN COLLAR, INCLUDING ALL FIXING POINTS
- SEWAGE SYSTEM MUST BE INSTALLED AT LEAST 500 MM ABOVE THE HIGHEST ADJACENT ROOF LAYER
- ALL DIMENSIONS MUST BE VERIFIED ON SITE ACCORDING TO THE ACTUAL CONSTRUCTION. THIS DOCUMENTATION DOES NOT REPLACE MANUFACTURER 'S SHOP DRAWINGS!

REFERENCES TO ANNEXES

- Dxx BOOK OF INTERIOR DOORS
- Txx BOOK OF CARPENTRY PRODUCTS
- Wxx BOOK OF WINDOWS AND EXTERIOR DOORS
- Kxx BOOK OF SHEET METAL PRODUCTS
- Lxx BOOK OF LINTELS

OTHER PRODUCTS

- K05 BOTTOM GALVANIZED STEEL SHEET , th. 0,55 mm, ANCHORED BY SCREWS TO THE PLYWOOD, SEE LIST OF ELEMENTS
- SW SEWER VENTILATION - DN 100, WITH INTEGRATED BITUMEN COLLAR, WITH RAIN CAP, INCLUDING ADDITIONAL SYSTEM ACCESSORIES, OUTLET AT LEAST 500 MM ABOVE THE ROOF
- K06 TOP GALVANIZED STEEL SHEET , th. 0,55 mm, ANCHORED BY SCREWS TO THE PLYWOOD, SEE LIST OF ELEMENTS
- SV EMERGENCY OVERFLOW - DN 125
- OT VERTICAL ROOF OUTLET TOPWET, DN 125, WITH BITUMEN SLEEVE, SEE LIST OF ELEMENTS
- RD ALUMINUM GRAVEL CAPTURE L PROFILE TOPWET, INSTALLED AROUND GRAVEL

ROOF COMPOSITION

- R01 VEGETATION LAYER - SMALL PLANTS 15-35 MM
- SUBSTRATE LAYER - SAND AND TARP 80 MM
- FILTRATION LAYER - PROTECTIVE NON-WOVEN TEXTILE
- DRAINAGE LAYER - DRAINAGE MAT 30 MM
- FILTRATION LAYER - PROTECTIVE NON-WOVEN TEXTILE 3 MM
- SBS MODIFIED BITUMEN FELT WITH POLYESTER FIBRE MAT
- SBS MODIFIED BITUMEN FELT WITH GLASS FIBRE MAT
- WATERPROOFING LAYER - SELF ADHESIVE BITUMEN SHEET 4 MM
- SLOPE-FORMING WEDGES FROM EPS 100 MIN. 60 MM
- THERMAL INSULATION EPS 100 140 MM
- VAPOR BARRIER ASPHALT MEMBRANE WITH ALUMINUM REINFORCEMENT 4 MM
- PENETRATION LAYER - ASPHALT PRIMER
- LOAD-BEARING LAYER - BEST PANEL 250 MM

$\pm 0,000 = 488,3 \text{ m.a.s.l., B.H.S}$
/ COORDINATE SYSTEM S-JTSK

COURSE	BACHELORS' THESIS	
DRAWN BY	ADELA MATUŠOVÁ	
SUPERVISED BY	PROF. ING. JITKA MOHELNÍKOVÁ, PH.D.	
INVESTOR	-	
LOCATION	Krokočín, č.p. 730/2 a 728/č, okres Třebíč, Kraj Vysočina	
PROJECT TITLE	FAMILY HOUSE WITH TATTOO STUDIO	
BUILDING OBJECT	SO 01	PAPER FORMAT 841x420
PART	D.1.1 ARCHITECTURAL BUILDING SOLUTION	DATE 20.5.2025
DRAWING TITLE:	FLAT ROOF PLAN	PROJ. PHASE DPS
		SCALE 1:50 DRAWING NO. D.1.1.04

